

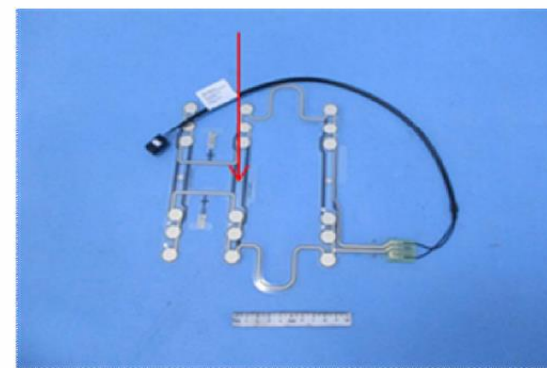
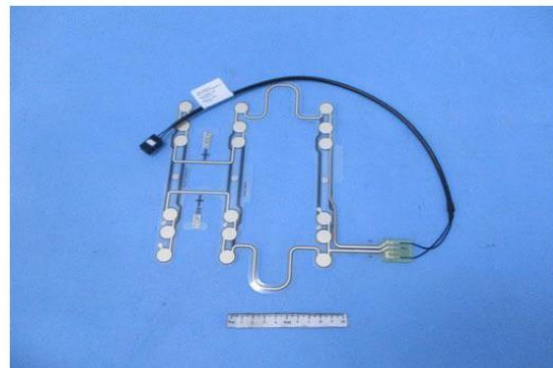
Proben-Nr. / Sample-No. 32100136
Datum / Date 2021.04.27-2021.04.29
Name / Name Wang Huai Jun

Kunde / costumer IEE (Langfang) Electronics & Engineering Co. Ltd.
Prüfgegenstand / Test part Driver Presence Detection
Material / Material

Photo(s) of the sample(s)

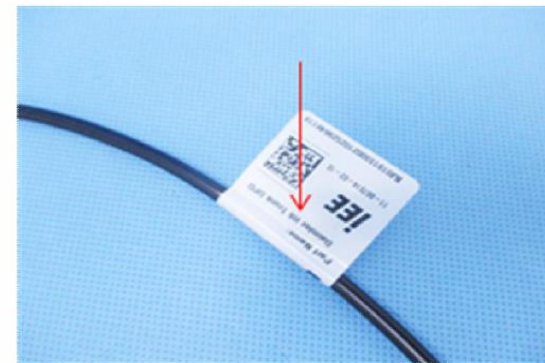
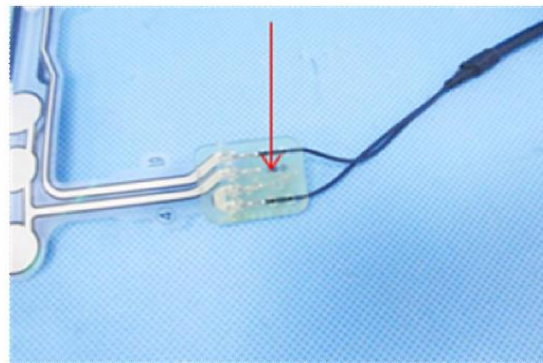
Final Product

1



2

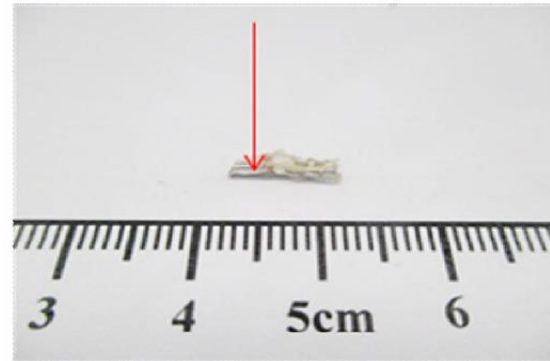
3



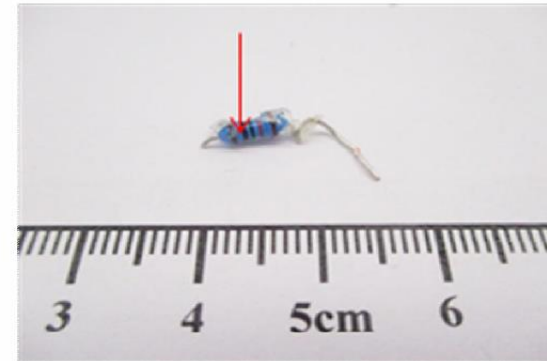
Proben-Nr. / Sample-No. 32100136
Datum / Date 2021.04.27-2021.04.29
Name / Name Wang Huai Jun

Kunde / costumer IEE (Langfang) Electronics & Engineering Co. Ltd.
Prüfgegenstand / Test part Driver Presence Detection
Material / Material

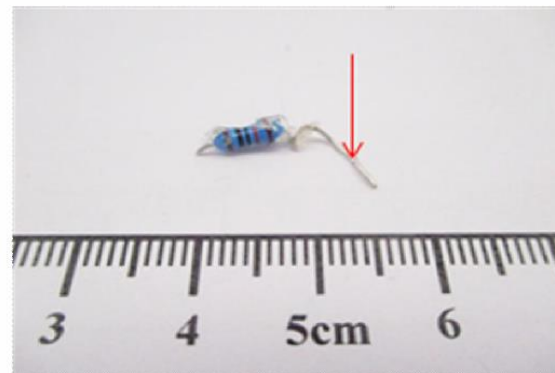
4



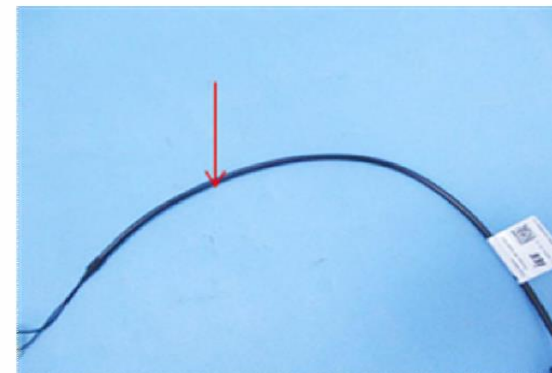
5



6



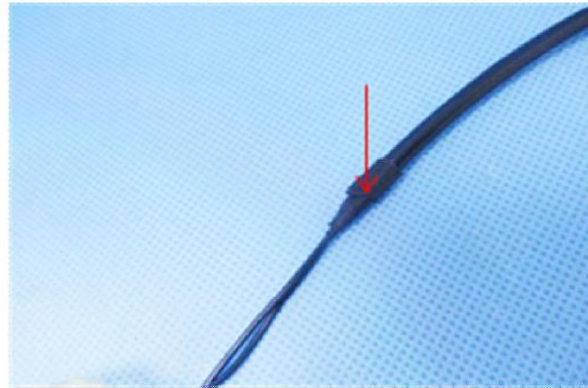
7



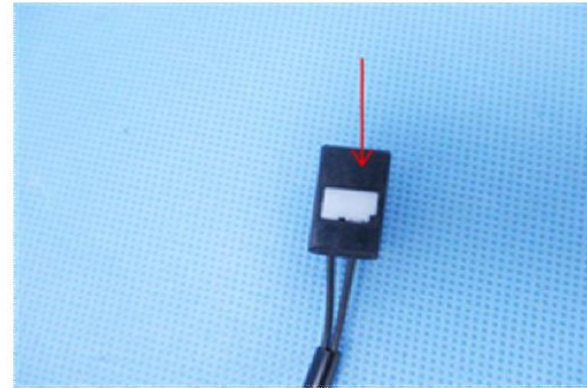
Proben-Nr. / Sample-No. 32100136
Datum / Date 2021.04.27-2021.04.29
Name / Name Wang Huai Jun

Kunde / costumer IEE (Langfang) Electronics & Engineering Co. Ltd.
Prüfgegenstand / Test part Driver Presence Detection
Material / Material

8



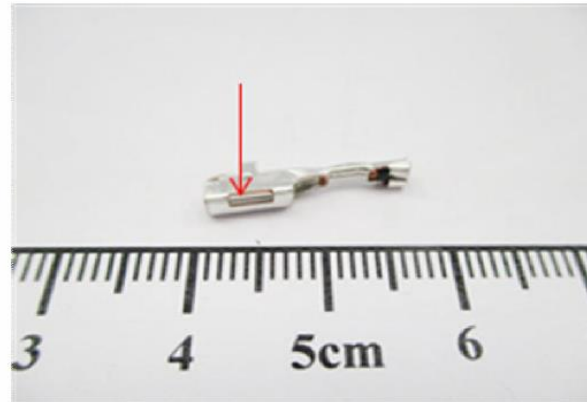
9



10



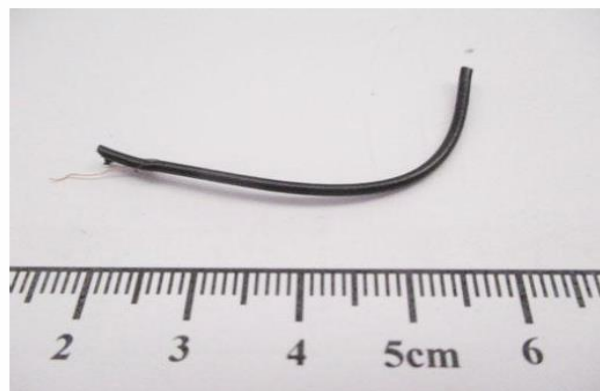
11



Proben-Nr. / Sample-No. 32100136
 Datum / Date 2021.04.27-2021.04.29
 Name / Name Wang Huai Jun

Kunde / costumer IEE (Langfang) Electronics & Engineering Co. Ltd.
 Prüfgegenstand / Test part Driver Presence Detection
 Material / Material _____

12



13

**Test requested**

According to DBL 8585 and customer request, to test Lead(Pb), Cadmium(Cd), Mercury(Hg), Hexavalent Chromium (Cr(VI)), Polybrominated Biphenyls (PBBs), Polybrominated Diphenyl Ethers (PBDEs) in the submitted sample(s).

Test method

Please see the following pages.

Test result

Please see the following pages.

Conclusion

Tested Sample	According to standard/directive	Result
Submitted Sample	Client's limit	PASS

Proben-Nr. / Sample-No. 32100136
 Datum / Date 2021.04.27-2021.04.29
 Name / Name Wang Huai Jun

Kunde / costumer IEE (Langfang) Electronics & Engineering Co. Ltd.
 Prüfgegenstand / Test part Driver Presence Detection
 Material / Material

Test Method

<u>Tested Item</u>	<u>Test Method</u>	<u>Measured Equipment</u>	<u>MDL (mg/kg)</u>
XRF	IEC62321-3-1:2013	XRF	Polymers: 10 Others: 50
Lead (Pb)	IEC 62321-5:2013	ICP-OES	2
Cadmium (Cd)	IEC 62321-5:2013	ICP-OES	2
Mercury (Hg)	IEC 62321-4:2013+AMD1:2017 CSV	ICP-OES	2
Hexavalent Chromium (Cr(VI))	IEC 62321-7-1:2015	UV-Vis	0.10µg/cm ² (LOQ)
	IEC 62321-7-2:2017 and/or determination of Total Chromium by IEC 62321-5:2013	UV-Vis/ ICP-OES	8
Polybrominated Biphenyls(PBBs)	IEC 62321-6:2015	GC-MS	5
Polybrominated Diphenyl Ethers (PBDEs)	IEC 62321-6:2015	GC-MS	5

Proben-Nr. / Sample-No. 32100136
 Datum / Date 2021.04.27-2021.04.29
 Name / Name Wang Huai Jun

Kunde / costumer IEE (Langfang) Electronics & Engineering Co. Ltd.
 Prüfgegenstand / Test part Driver Presence Detection
 Material / Material

Test result

Sample No.	Sample Description	Restricted Substances	Results of XRF Screen (mg/kg)	Results of Chemical Test (mg/kg)
1	FPC (Tested as a whole)	Pb	N.D.	-
		Cd	N.D.	-
		Hg	N.D.	-
		Cr(Cr(VI))	N.D.	-
		Br(PBBs&PBDEs)	N.D.	-
2	Light yellow adhesive	Pb	N.D.	-
		Cd	N.D.	-
		Hg	N.D.	-
		Cr(Cr(VI))	N.D.	-
		Br(PBBs&PBDEs)	N.D.	-
3	White label with black printing	Pb	N.D.	-
		Cd	N.D.	-
		Hg	N.D.	-
		Cr(Cr(VI))	N.D.	-
		Br(PBBs&PBDEs)	N.D.	-
4	Silvery metal	Pb	N.D.	-
		Cd	N.D.	-
		Hg	N.D.	-
		Cr(Cr(VI))	N.D.	-

Proben-Nr. / Sample-No. 32100136
 Datum / Date 2021.04.27-2021.04.29
 Name / Name Wang Huai Jun

Kunde / costumer IEE (Langfang) Electronics & Engineering Co. Ltd.
 Prüfgegenstand / Test part Driver Presence Detection
 Material / Material

5	Body with multicolor ink(Tested as a whole)	Pb	N.D.	-
		Cd	N.D.	-
		Hg	N.D.	-
		Cr(Cr(VI))	$\triangle 1.7 \times 10^3$	N.D.
		Br(PBBs&PBDEs)	N.D.	-
6	Silvery metal pin	Pb	N.D.	-
		Cd	N.D.	-
		Hg	N.D.	-
		Cr(Cr(VI))	N.D.	-
7	Black plastic tube	Pb	N.D.	-
		Cd	N.D.	-
		Hg	N.D.	-
		Cr(Cr(VI))	N.D.	-
		Br(PBBs&PBDEs)	N.D.	-
8	Black adhesive fabric	Pb	N.D.	-
		Cd	N.D.	-
		Hg	N.D.	-
		Cr(Cr(VI))	N.D.	-
		Br(PBBs&PBDEs)	N.D.	-
9	Black plastic	Pb	N.D.	-
		Cd	N.D.	-
		Hg	N.D.	-
		Cr(Cr(VI))	N.D.	-
		Br(PBBs&PBDEs)	N.D.	-
10	White plastic	Pb	N.D.	-
		Cd	N.D.	-
		Hg	N.D.	-
		Cr(Cr(VI))	11	-
		Br(PBBs&PBDEs)	N.D.	-

Proben-Nr. / Sample-No. 32100136
 Datum / Date 2021.04.27-2021.04.29
 Name / Name Wang Huai Jun

Kunde / costumer IEE (Langfang) Electronics & Engineering Co. Ltd.
 Prüfgegenstand / Test part Driver Presence Detection
 Material / Material

11	Silvery metal	Pb	N.D.	-
		Cd	N.D.	-
		Hg	N.D.	-
		Cr(Cr(VI))	N.D.	-
12	Black plastic wire jacket	Pb	N.D.	-
		Cd	N.D.	-
		Hg	N.D.	-
		Cr(Cr(VI))	N.D.	-
		Br(PBBs&PBDEs)	N.D.	-
13	Cupreous metal wire	Pb	N.D.	-
		Cd	N.D.	-
		Hg	N.D.	-
		Cr(Cr(VI))	N.D.	-

Proben-Nr. / Sample-No. 32100136
 Datum / Date 2021.04.27-2021.04.29
 Name / Name Wang Huai Jun

Kunde / costumer IEE (Langfang) Electronics & Engineering Co. Ltd.
 Prüfgegenstand / Test part Driver Presence Detection
 Material / Material

Remark: -The sample(s) was tested as a whole, because it's impossible to disassemble or separate it by current equipment and technology. The result(s) shown on this report may be different from the content of any homogeneous material.

- MDL = Method Detection Limit

-N.D. = Not Detected (<MDL or LOQ)

-mg/kg = ppm = parts per million

-1000mg/kg = 0.1%

- - = Not tested.

-LOQ = Limit of Quantification, The LOQ of Hexavalent chromium is 0.10 µg/cm²

-△= The test result is over the XRF screening limit, please see the chemistry test result.

-It is the result on total Chromium by XRF while the restricted substance is Hexavalent Chromium.

-It is the result on total Brome by XRF while the restricted substances are Polybrominated Biphenyls (PBBs) and Polybrominated Diphenyl Ethers (PBDEs).

-PASS = The hazardous substances content in the submitted sample are less than client's limit.

- FAIL =One or more than one hazardous substance content in the submitted sample is over client's limit.

Client's limit

Pb ≤ 1000mg/kg

Cr(VI) ≤ 1000mg/kg

Hg ≤ 1000mg/kg

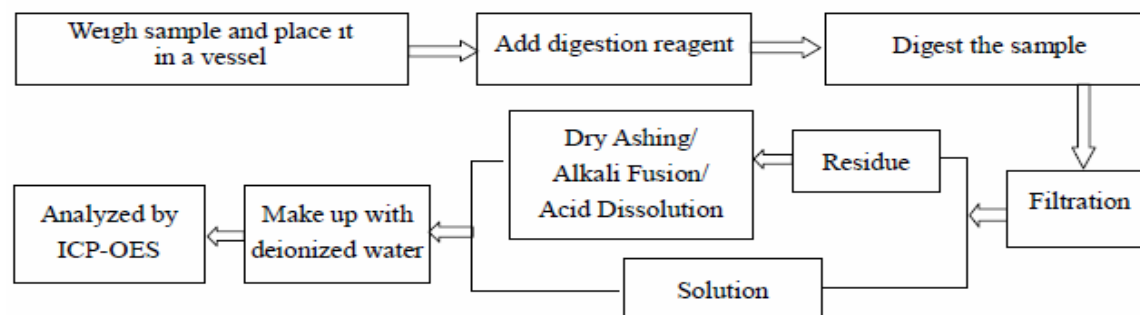
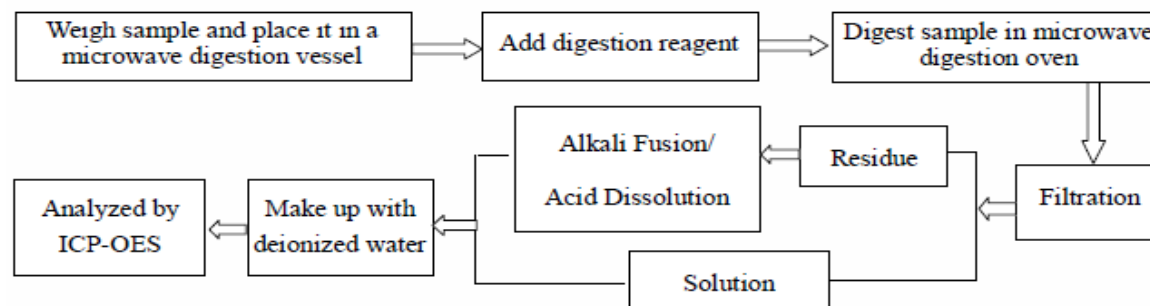
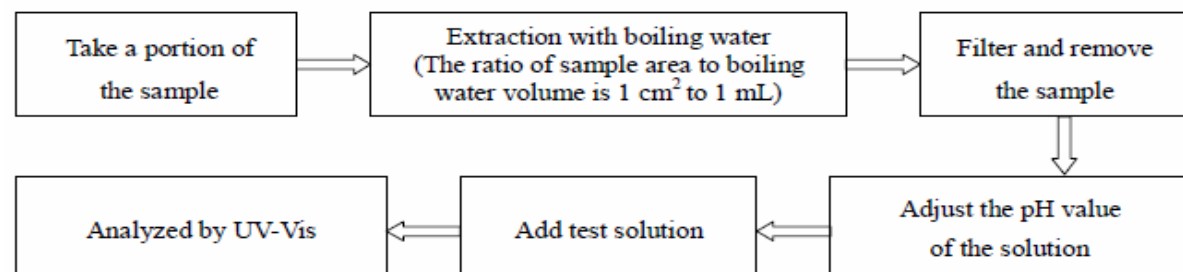
Cd ≤ 100mg/kg

PBBs ≤ 1000mg/kg

PBDEs ≤ 1000mg/kg

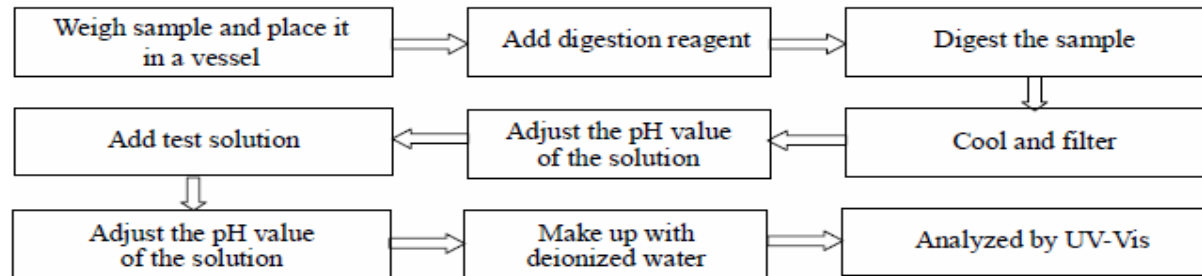
Proben-Nr. / Sample-No. 32100136
 Datum / Date 2021.04.27-2021.04.29
 Name / Name Wang Huai Jun

Kunde / costumer IEE (Langfang) Electronics & Engineering Co. Ltd.
 Prüfgegenstand / Test part Driver Presence Detection
 Material / Material

Test Process**1. Lead(Pb), Cadmium(Cd), Chromium(Cr)****2. Mercury (Hg)****3. Hexavalent Chromium (Cr(VI))****(1) IEC 62321-7-1:2015**

Proben-Nr. / Sample-No. 32100136
 Datum / Date 2021.04.27-2021.04.29
 Name / Name Wang Huai Jun

Kunde / costumer IEE (Langfang) Electronics & Engineering Co. Ltd.
 Prüfgegenstand / Test part Driver Presence Detection
 Material / Material

(2) IEC 62321-7-2:2017**4. Polybrominated Biphenyls(PBBs), Polybrominated Diphenyl Ethers(PBDEs)**